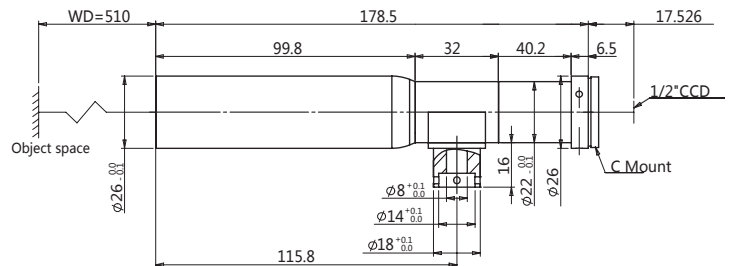


# Datasheet

## WWH10-510CT C-mount Megapixel Telecentric Lens



### Features

- Compact design with coaxial light options
- Perfect image and supports all kinds of mega cameras
- Optional adjustable Iris for resolution and DOF control
- High contrast, low distortion, high resolution
- With optional long working distance, versions with over 500mm WD.

### Optical Specifications

Magnification(x)	1.0
Working Distance(mm)	510±3
Max Sensor Size(Φmm)	8.0(1/2")
Best Aperture(f/#)	F25.3
MTF30(lp/mm)	≥ 33
Optical Distortion(%)	≤ 0.3
Telecentricity(deg)	≤ 0.1
NA	0.019
Resolution(um)	17.7
Depth of Field(mm)	2.0

### Mechanical Specifications

Mount	C
Length(mm)	178.5
Weight(kg)	-
Coaxial Light	Yes
Adjustable Iris	No

### Field of View(mm x mm)

1/2" 9M001 with 6.66x5.33	6.66x5.33
1/2" ICX267/205 with 6.47x4.84	6.47x4.84