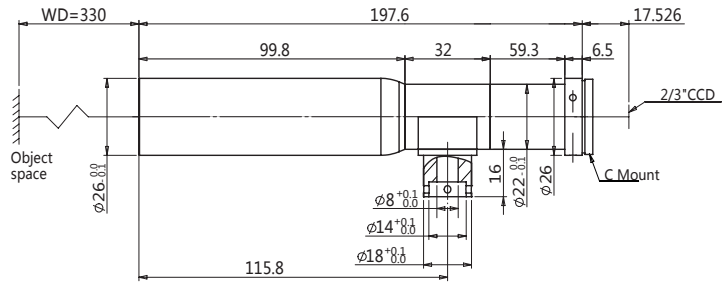


Datasheet

WWH10-330CT C-mount Megapixel Telecentric Lens



Features

- Compact design with coaxial light options
- Perfect image and supports all kinds of mega cameras
- Optional adjustable Iris for resolution and DOF control
- High contrast, low distortion, high resolution
- With optional long working distance, versions with over 500mm WD.

Optical Specifications

Magnification(x)	1.0
Working Distance(mm)	330±3
Max Sensor Size(Φmm)	11.5(2/3")
Best Aperture(f/#)	F30.0
MTF30(lp/mm)	≥ 30
Optical Distortion(%)	≤ 0.2
Telecentricity(deg)	≤ 0.1
NA	0.016
Resolution(um)	21.0
Depth of Field(mm)	2.40

Mechanical Specifications

Mount	C
Length(mm)	197.6
Weight(kg)	-
Coaxial Light	Yes
Adjustable Iris	No

Field of View(mm x mm)

2/3" ICX625/655 with 8.47x7.10	8.47x7.10
2/3" CMV2000 with 11.26x5.98	11.26x5.98