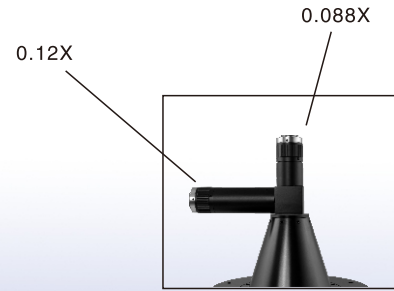
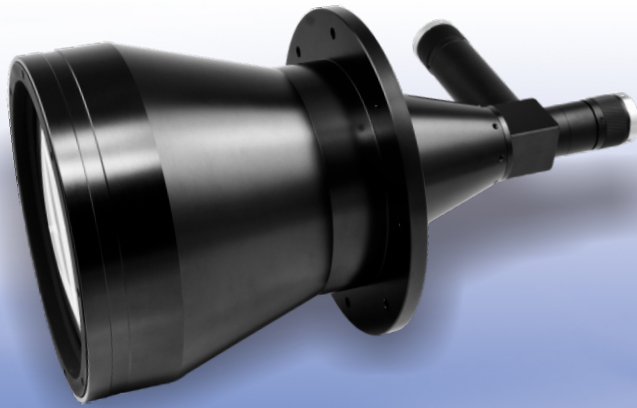


Pomeas Bi-Telecentric Lens DTCDM Series

PMS-DTCDM1.4-182



1. Dual ports, Bi-telecentric lens
2. Support 2 cameras with different magnifications
3. Large FOV, High DOF

Code		PMS-DTCDM1.4-182	
Magnification		0.088X	0.12X
Field Of View	1/4"	36.4mm×27.3mm	26.7mm×20.0mm
	1/3"	54.5mm×40.9mm	40.0mm×30.0mm
	1/2.5"	65.3mm×49.0mm	47.9mm×35.9mm
	1/2.3"	70.0mm×52.5mm	51.3mm×38.5mm
	1/2"	72.7mm×54.5mm	53.3mm×40.0mm
	1/1.8"	81.2mm×60.9mm	59.6mm×44.7mm
	2/3"	100.0mm×75.0mm	73.3mm×55.0mm
	1"	145.5mm×109.1mm	--
F.No.		5.5	10
TV Distortion		0.016%	0.007%
DOF		56.8mm	55.6mm
N.A.		0.008	0.006
Central MTF%@70IP/mm		>65	>45
Resolution		42μm	56μm
Max.Sensor Size		1"	2/3"
Object Side Telecentricity		< 0.1 °	< 0.02 °
Image Side Telecentricity		< 0.02 °	< 0.02 °
W.D.		390mm	
Length		495.3mm	
Diameter/Width		∅ 229.6mm	
Mount		C-mount	
Illumination		--	
Working Temperature		-10°C ~ +50°C	

Optional Accessories



Ring Illumination



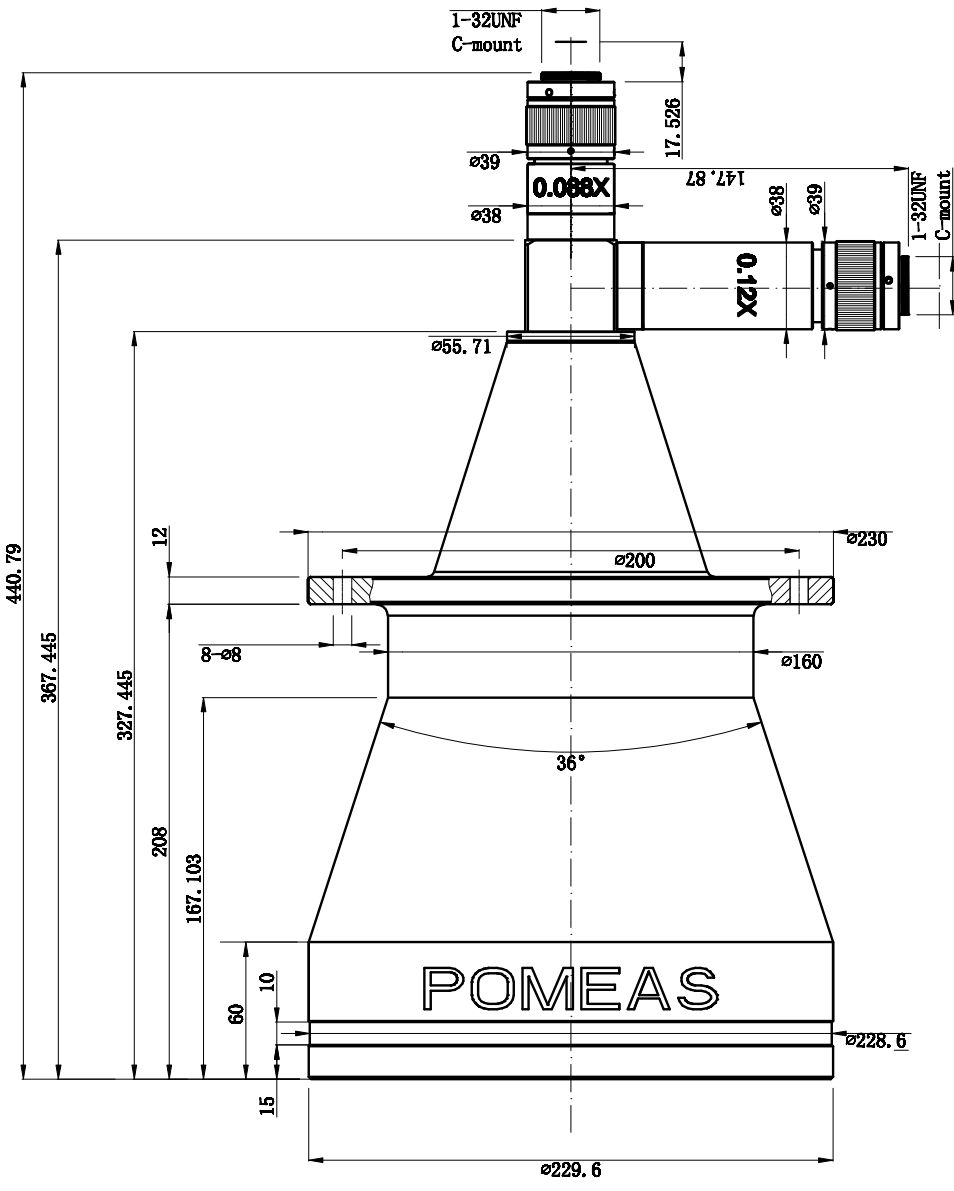
250Telecentric Illumination
PMS-LTD250



One-way Illumination Controller
PMS-ICT



Multi-way Illumination Controller
PMS-LP12V1AX2



Unit:mm	Scale	1:10
	Name	PMS-DTCDM1.4-182
	Date	2012.9.13
POMEAS		