

# High Resolution Telecentric lens

- Support camera with Megapixels resolution
- Object telecentric design
- Standard C-Mount

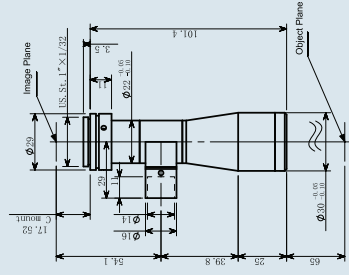
- Support camera with Megapixels resolution
- WD 65mm & 110mm
- Object telecentric design
- Standard C-Mount
- Depth of focus is calculated by permissive circle radius of confusion  $\leq 20\mu\text{m}$  on the image side, we can also provide customer DOF data at specific resolution and contrast requirements.



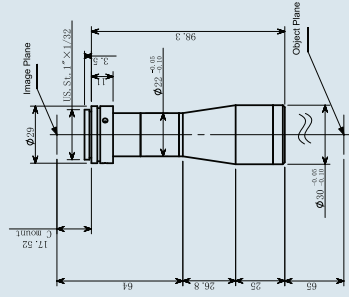
Model	Coax.	Mag.	WD (mm)	Telecentricity (degree)	Distortion (%)	DOF (mm)	Resolution ( $\mu\text{m}$ )	Mount (17.526mm)	FOV for different Sensor size (mm x mm)		
									1/3inch 4.8x3.6	1/2inch 6.4x4.8	2/3inch 8.8x6.6
XF-MT2X110D	Y	2X	110	0.1	0.1	0.36	5.24	C-Mount	2.4x1.8	3.2x2.4	4.4x3.3
XF-MT2X110	N	2X	110	0.1	0.1	0.36	5.24	C-Mount	2.4x1.8	3.2x2.4	4.4x3.3
XF-MT1.5X110D	Y	1.5X	110	0.08	0.07	0.55	4.46	C-Mount	3.2x2.4	4.28x3.2	5.8x4.4
XF-MT1.5X110	N	1.5X	110	0.08	0.07	0.55	4.46	C-Mount	3.2x2.4	4.28x3.2	5.8x4.4
XF-MT1X110D	Y	1X	110	0.02	0.03	1.2	7.3	C-Mount	4.8x3.6	6.4x4.8	8.8x6.6
XF-MT1X110	N	1X	110	0.02	0.03	1.2	7.3	C-Mount	4.8x3.6	6.4x4.8	8.8x6.6

Model	Coax.	Mag.	WD (mm)	Telecentricity (degree)	Distortion (%)	DOF (mm)	Resolution ( $\mu\text{m}$ )	Mount (17.526mm)	FOV for different Sensor size (mm x mm)		
									1/3inch 4.8x3.6	1/2inch 6.4x4.8	2/3inch 8.8x6.6
XF-MT0.8X110D	Y	0.8X	110	0.02	0.01	1.7	8.25	C-Mount	8x4.5	8x6	11x8.2
XF-MT0.8X110	N	0.8X	110	0.02	0.01	1.7	8.25	C-Mount	8x4.5	8x6	11x8.2
XF-MT1X65D	Y	1X	65	0.08	0.04	1.2		C-Mount	4.8x3.6	6.4x4.8	8.8x6.6
XF-MT1X65	N	1X	65	0.08	0.04	1.2		C-Mount	4.8x3.6	6.4x4.8	8.8x6.6
XF-MT0.8X65D	Y	0.8X	65	0.08	0.09	1.7		C-Mount	6x4.5	8x6	11x8.2
XF-MT0.8X65	N	0.8X	65	0.08	0.09	1.7		C-Mount	6x4.5	8x6	11x8.2

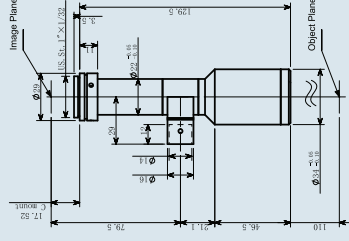
XF-MT0.8X65D



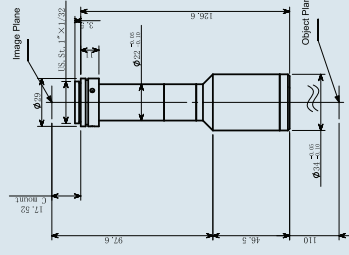
XF-MT0.8X65



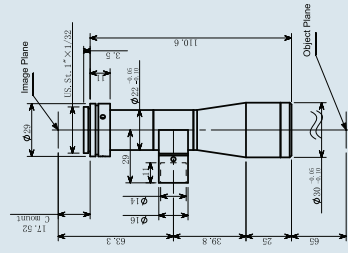
XF-MT1X110D



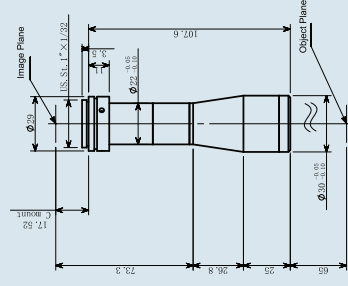
XF-MT1X110



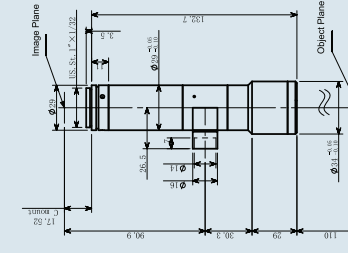
XF-MT1X65D



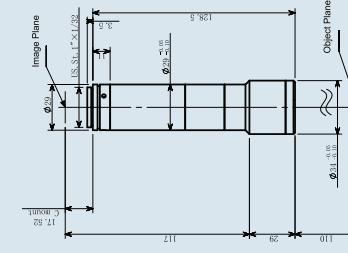
XF-MT1X65



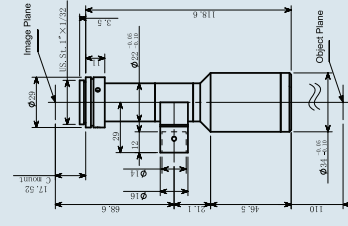
XF-MT2X110D



XF-MT2X110



XF-MT0.8X110D



XF-MT0.8X110

