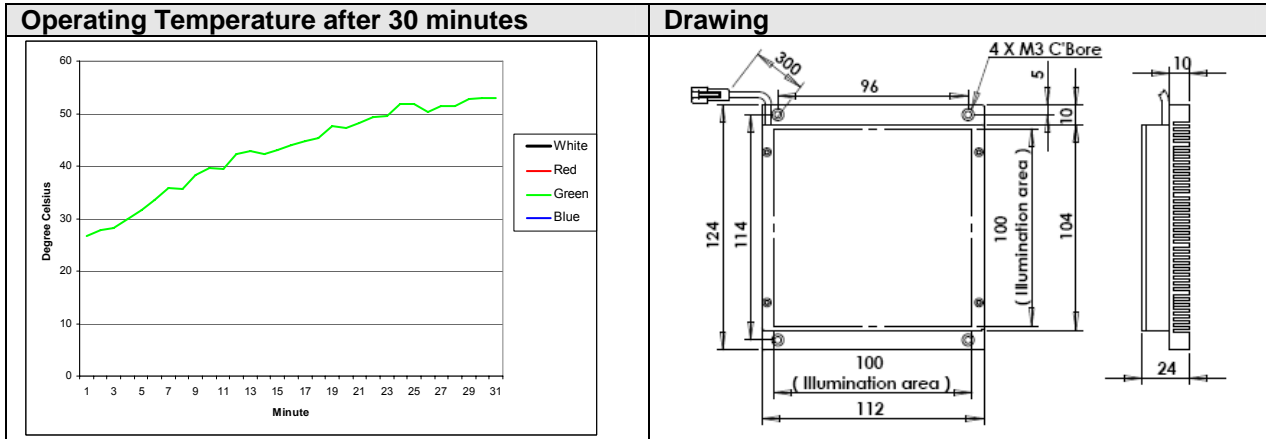
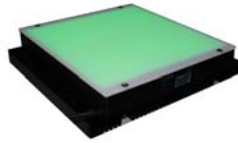




High Brightness  
Diffuse Back Light

# FLDL-TP-SXi100



Mechanical Data (TYP)	
Casing Material	Aluminum + Diffuser
Storage Temperature Range	Temp 0-35°C, Humidity 20-85%
Weight	Approx. 370g

Optical Data (TYP)	R	R24	W	G	B
Illumination (number of LED)	-	-	324		
Led Color	-	-	WHITE	GREEN	BLUE
Wavelength	-	-	xy=(0.31,0.32)	525nm	470nm
Led Package	-	-	SMD		

Electrical Data (TYP)	R	R24	W/G/B
Operating Voltage	-	-	24V ± 2%
Reverse Battery Protection	-	-	YES
Supply Ripple Voltage	-	-	≤ Vs ± 5%
Current Consumption	-	-	1.08A
Power Consumption	-	-	25.92W
Trigger Voltage	-	-	Continuous= 24V Pulsing 48V 0-10% Duty Cycle
Operating after 30 minutes	-	-	Approx. 53°C
Additional Cooling Method	Attached to large machine part		
Life span in continuous mode	20,000 hours (drop to 50% intensity) at 25°C		
Life span in strobe light mode	Est. >50,000 hours (drop to 50% intensity) at 25°C		
Connection	-	-	JST SMR-03V, 1:+,3:-
Power Supply Selection	-	-	PSA-24V PSD-24V PSD-STL-48V